



SMI Commercial • Industrial Division

Calgary SMI Commercial Real Estate Limited
Suite 107,
825 – 8th Avenue S.W.
Calgary, Alberta, T2P 2T3

FAX: (403) 263-2567

www.smicommercial.com

Contact:

Mathieu Déry
(403) 266-0777
mdery@smicommercial.com



Office or Storage For Lease

Office/Storage Suite 106

1,600 +/- sq. ft.

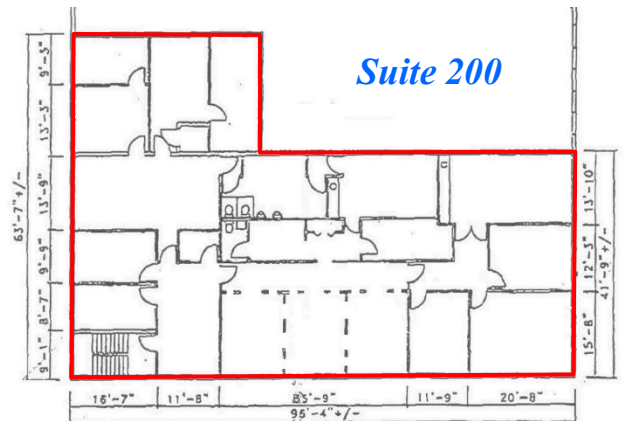
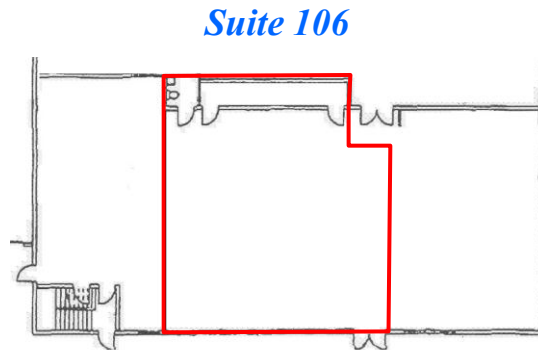
- Main Floor open area with washroom
 - T-bar ceiling, HVAC and storefront windows
 - Barlow Trail Exposure
- \$11.00 total gross incl. util.**

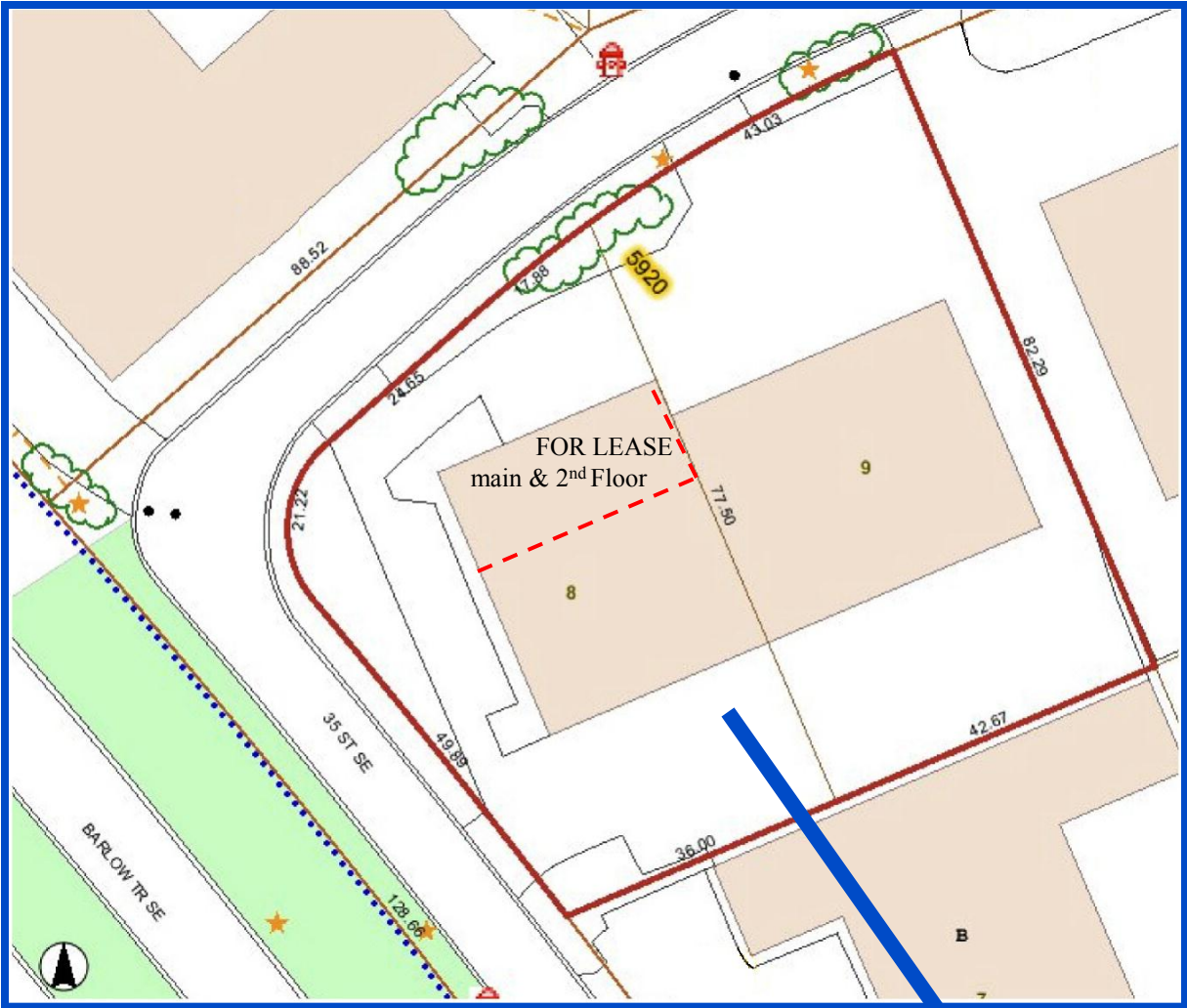
Office Suite 200

4,900 +/- sq. ft.

- 2nd Floor, high-quality
 - Exclusive main floor access
 - Enclosed executive style offices and open area
 - large boardroom and staff lounge with kitchenettes
 - Locker/washroom with shower
 - Perimeter windows and air conditioning
- \$9.75 total gross incl. util.**

5920 – 35th Street S.E.





- Foothills Industrial Park
- Direct Exposure to Barlow Trail
- Minutes to downtown
- Close to major transportation routes of Trans Canada Hwy. #1 and Deerfoot / Queen Elizabeth Hwy. #2

