



SMI Commercial • Industrial Division

Calgary SMI Commercial Real Estate Limited
Suite 107,
825 – 8th Avenue S.W.
Calgary, Alberta, T2P 2T3

FAX: (403) 261-8703

www.smicommercial.com

Contact:

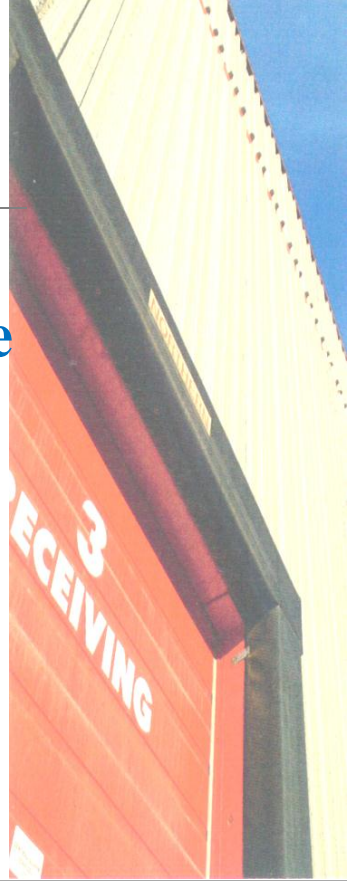
Roger Fuller
(403) 263-3162

rfuller@simcommercial.com

Serviced Industrial Land for Sale

3.1 acres For Sale

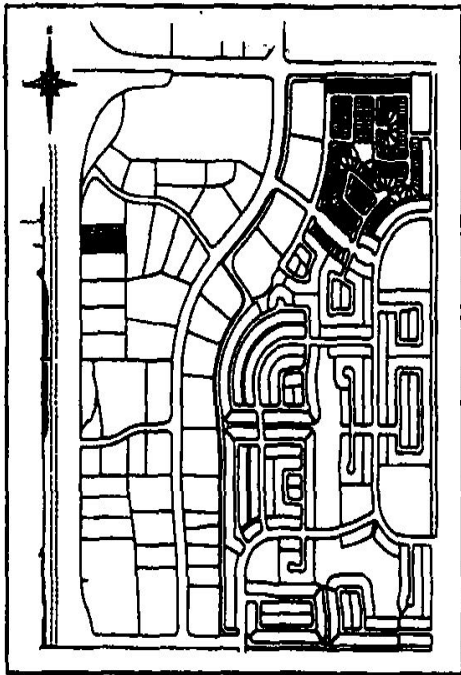
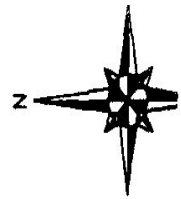
**45 Kingsview Road SE
Airdrie, Alberta**



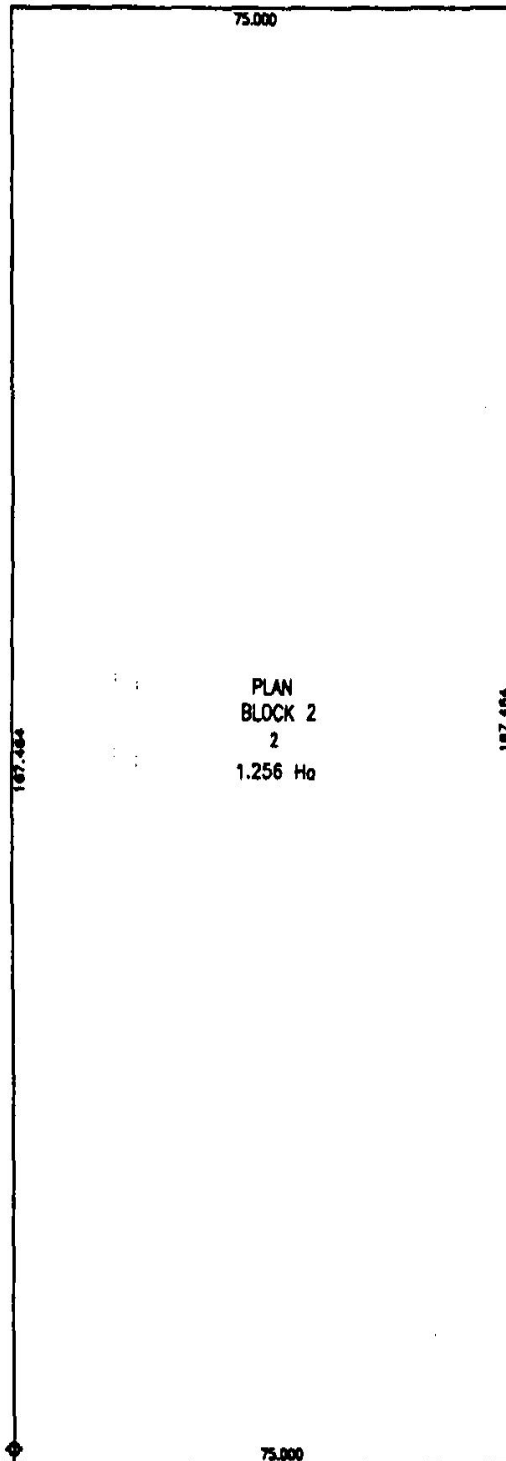
- Size: +/- 3.1 acres (1.256 Hectares)
- Land Use: IB-1
 - Legal: Plan 0514065; Block 2; Lot 6
 - Fully Serviced
- Excellent exposure to Highway 2 (QE2)
- Short driving distance to Calgary
- Ideal location for development of Commercial property
- Asking Price: **\$1.736M (\$560,000/ac.)**



All information herein is subject to purchaser's verification



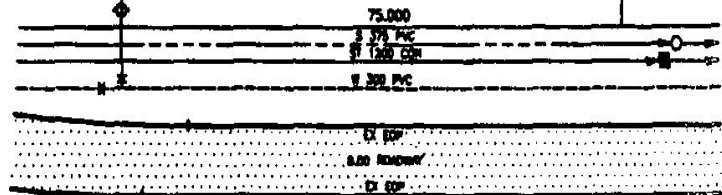
KEY PLAN
SCALE: N.T.S.



PLAN
BLOCK 2
2
1.256 Ha

LEGEND

- SIDEWALK/CURB & GUTTER
- □ — STORM SEWER & MANHOLE
- ○ — SANITARY SEWER & MANHOLE
- * — WATER MAIN, VALVE & HYDRANT
- CATCH BASIN & LEAD
- PAVED ROADWAY



KINGSVIEW ROAD